



Submittal Data Sheet

VSUB20SS Variable Speed Universal

Job Name: _____

Equipment Rep: _____

Contractor: _____

Prepared By: _____

Arch./Engr.: _____

Date: _____

Description:

The VSUB20SS Variable Speed Universal Blower is suitable for providing combustion air or sidewall or vertically venting heating appliances, dryers and ovens. Suitable for use on condensing equipment. Can be installed indoors or outdoors.

Use with the MPC-Series Modulating Pressure Controllers, VFD and Pressure Sensor for an automatic-variable speed system which will modulate to always deliver the perfect amount of draft, combustion air or ventilation.

Housing Construction:

Constructed of 14-gauge, Type 316L stainless steel with continuous welds. The blower outlet rotates 180° for installation flexibility. The motor chassis slides away from the housing on polyethylene guides for easy motor and impeller access.

Impeller:

Backward inclined, Type 304 stainless steel, Class 1 impeller is both dynamically and statically balanced with permanently attached balancing weights.

Motor:

Three phase, 3 HP, 208-230/460 VAC, TEFC, EPACT High Efficiency Rated, arctic-duty, thermal overload protected, permanently lubricated and sealed ball bearing.

Standard Equipment:

- 4" x 4" weatherproof junction box with 4' conduit
- Square to round vent pipe adapter
- PSA-1 Fan Proving Switch
- FFP-1 Freeze and Fire Protection Limit (FFP-1 For combustion air applications only!)
- Condensate drain kit

Optional Controls:

- MPC Modulating Pressure Controller
- MPC1 Modulating Pressure Controller Interlocked
- MAC1E Multiple Appliance Control
- MAC4E Multiple Appliance Control
- IPS-1 Indoor Pressure Sensor with Decorative Cover
- VFD-Series Variable Frequency Drives

Temperature Rating:

U.S. and Canada 575°F / 300°C

Listings:

ETL # 56826
 UL 378 - Draft Equipment / Variable Speed
 UL 705 - Power Ventilators
 CSA-CAN3-B255-M81*



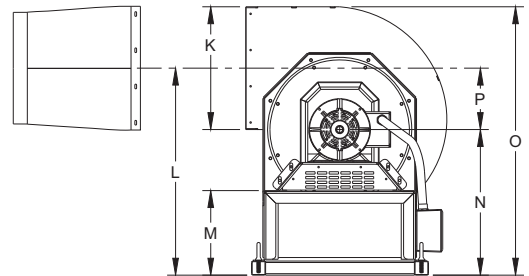
*Not Listed for use on condensing equipment in Canada.

Warranty:

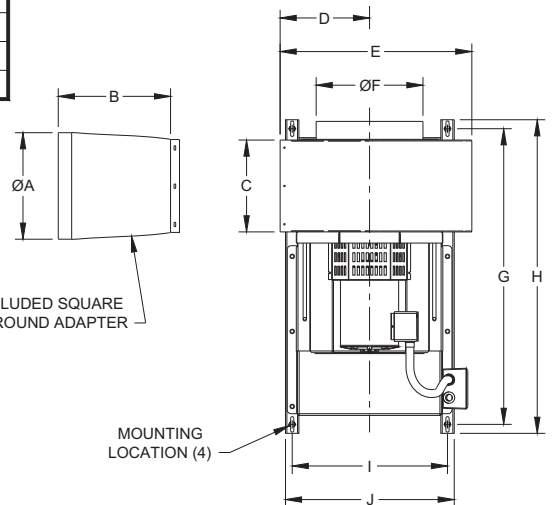
2 year mechanical

Model VSUB20SS	208-230 Volt	460 Volt
Power hp	3	3
Amps A	8.8 - 8.2	4.1
Voltage VAC	3x208-230	3x460
Weight	370 Lbs. / 168 Kgs.	

	VSUB20SS
A	19 7/8"
B	14"
C	14 7/16"
D	15 1/8"
E	32 11/16"
F	19 11/16"
G	45 3/16"
H	47 3/16"
I	26 7/16"
J	27 15/16"
K	20 1/8"
L	33 1/2"
M	15 3/8"
N	23 7/16"
O	43 1/2"
P	10"



END VIEW



TOP VIEW